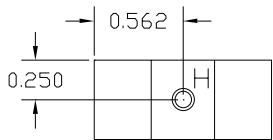
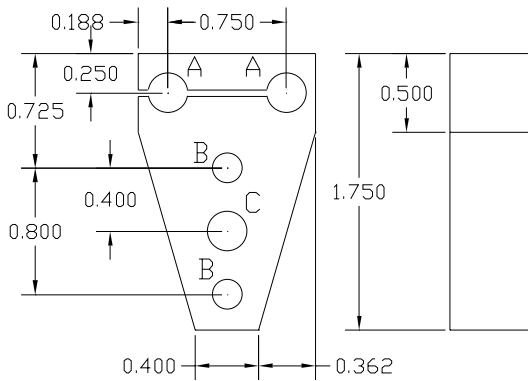
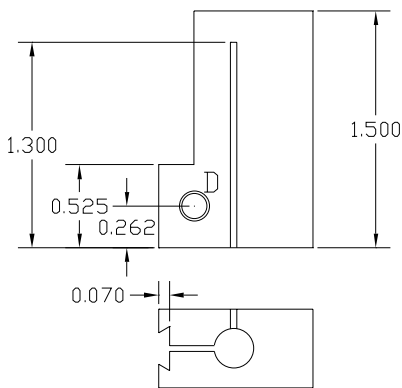
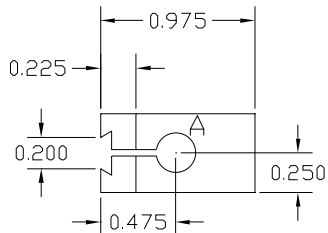


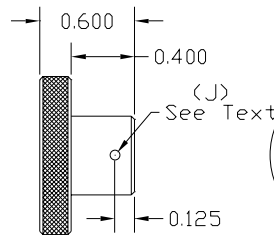
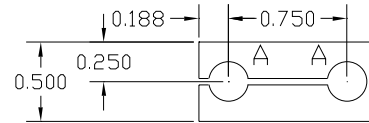
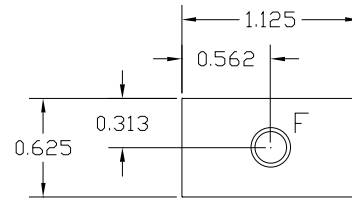
Main Block (Alum.)



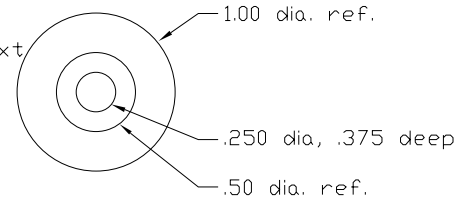
Holder (Alum.)



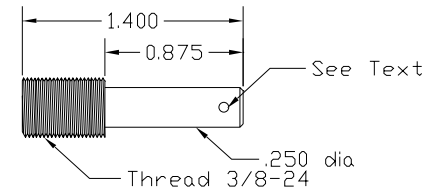
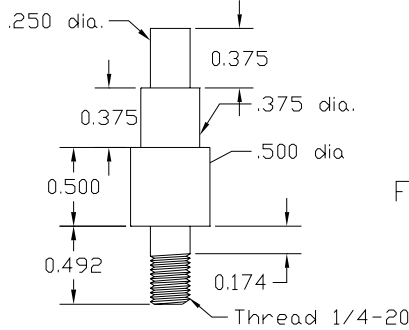
Spindle Block (Alum.)



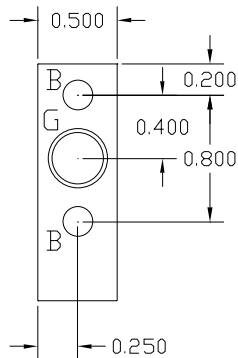
Knob (CRS)



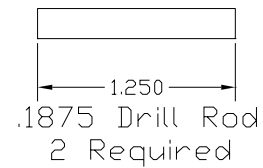
Spindle (CRS)



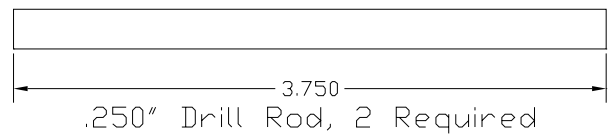
Fine Adjust Screw (CRS)



Fine Rods (Drill Rod)



Main Rods (Drill Rod)



Hole Schedule

- A - Drill & Ream .250
- B - Drill & Ream .1875
- C - Drill .257
- D - Drill .177, .280 Deep, Drill Thru & Tap 8-32
- E - Drill .257, .280 Deep, Drill & Tap 1/4-20, .700 Deep
- F - Drill .257, .280 Deep, Drill & Tap Thru 1/4-20
- G - Drill & Tap 3/8-24, .500 Deep
- H - Drill & Tap 6-32, .225 Deep
- J - Drill Thru .0625